

CAST IRON FLANGED END BALL VALVE

KVS - 303

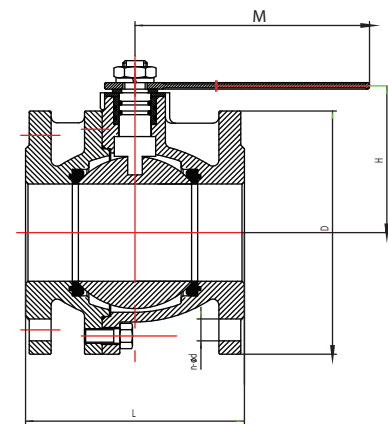
SPECIFICATION

- End connection : BS EN 558-1 Series 14 (DN50-100)
: BS EN 558-1 Series 15 (DN125-200)
- Operating pressure : 16 bar
- Shell test pressure : 24 bar
- Operating temperature : 0°C - 130°C
- Working Medium : Water



MATERIALS

DESCRIPTION	MATERIAL
Body	Cast Iron
Bonnet	Cast Iron
Ball	Stainless Steel
Stem	Stainless Steel
O-ring	EPDM
Gasket	Cast Brass
Handle	Ductile Iron



DIMENSIONS (mm)

DN	L	D	n-d	M
50	150	165	4-19	220
65	170	185	4-19	284
80	180	200	8-19	284
100	190	220	8-19	500
125	325	250	8-19	600
150	350	285	8-23	800
200	400	340	12-23	1000

Flanged drilled conforms to BS EN1092

*All dimensions are nominal. Actual dimensions may vary.