



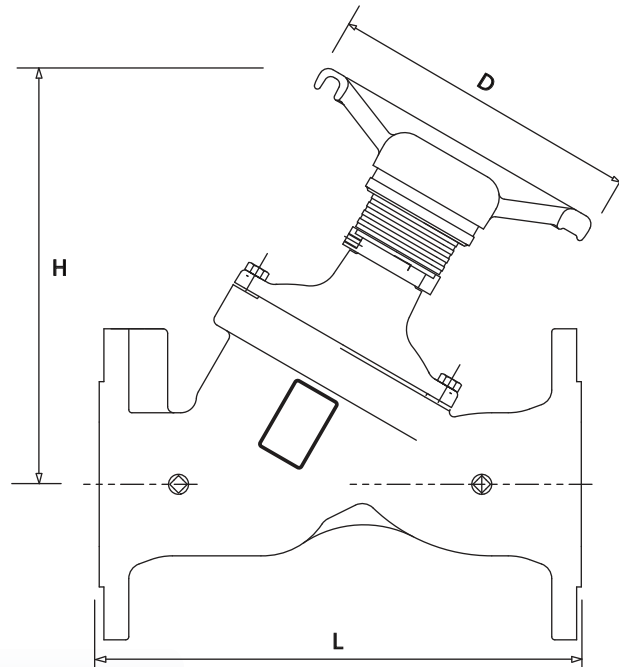
VARIABLE ORIFICE BALANCING VALVE

Model: KVS - 2872



SPECIFICATION

- Designed to BS7350
- Pressure Rating: PN16 / PN25
- Working Medium: Water, Working
- Working temperature: -10... + 120°C
- Flanged to BS 4504 / BS EN1092
- EPDM Coated Disc
- Double Regulating (Memory Stop) device
- Flow Data available
- Other flange standards available upon request
- Other PN pressure ratings available upon request
- ANSI standards available upon request
- Superior to variable orifice DRV due to higher accuracy from integral fixed orifice
- Flow reading across fixed orifice +/-10%
- Valve must be installed fully in accordance with instructions.



MATERIALS

Description	Material
Body	Ductile Iron (EN-JL1050)
Disc	Ductile Iron (EN-JL1050 + EPDM)
Stem	Stainless Steel (BS970 410S21)
Bonnet	Ductile Iron (EN-JL1050)
Handwheel	Ductile Iron (EN-JL1050)
Plugs	DZR Brass

DIMENSIONS (mm)

Size	Size		H	L	Ø
	mm	Inches			
65	65	2½"	265	290	200
80	80	3"	270	310	200
100	100	4"	310	350	240
125	125	5"	340	400	290
150	150	6"	340	480	290
200	200	8"	537	600	350
250	250	10"	570	780	420
300	300	12"	690	850	420
350	350	14"	730	980	420
400	400	16"	780	1100	420
450	450	18"	820	1200	420



VARIABLE ORIFICE BALANCING VALVE

Model: KVS - 2872

FLOW / RESISTANCE COEFICIENTS (Kv VALUE)

VALVE Size	DN 65	DN 80	DN 100	DN 125	DN 150	DN 200	DN 250	DN 300
0.5	5	3	4.5	10	10	-	-	-
1.0	10	6	9	20	20	21	-	-
1.5	12.5	10	14.5	32	31	-	-	-
2	15	14	20	44	42	40	100	100
2.5	19	17	24.5	53	63.5	-	-	-
3	23	20	29	62	85	57	138	155
4	29	31	37	86	137	72	176	210
5	39	46	52	128	217	120	301	341
6	57	68	80	198	284	185	426	471
7	74	94	114	230	351	250	594	610
8	85	111	146	250	380	315	762	749
9	-	-	-	-	-	390	889	872
10	-	-	-	-	-	470	1015	994
11	-	-	-	-	-	550	1113	1112
12	-	-	-	-	-	600	1211	1230
14	-	-	-	-	-	-	-	1369
16	-	-	-	-	-	-	-	1438
18	-	-	-	-	-	-	-	1521



VARIABLE ORIFICE BALANCING VALVE

Model: KVS - 2872

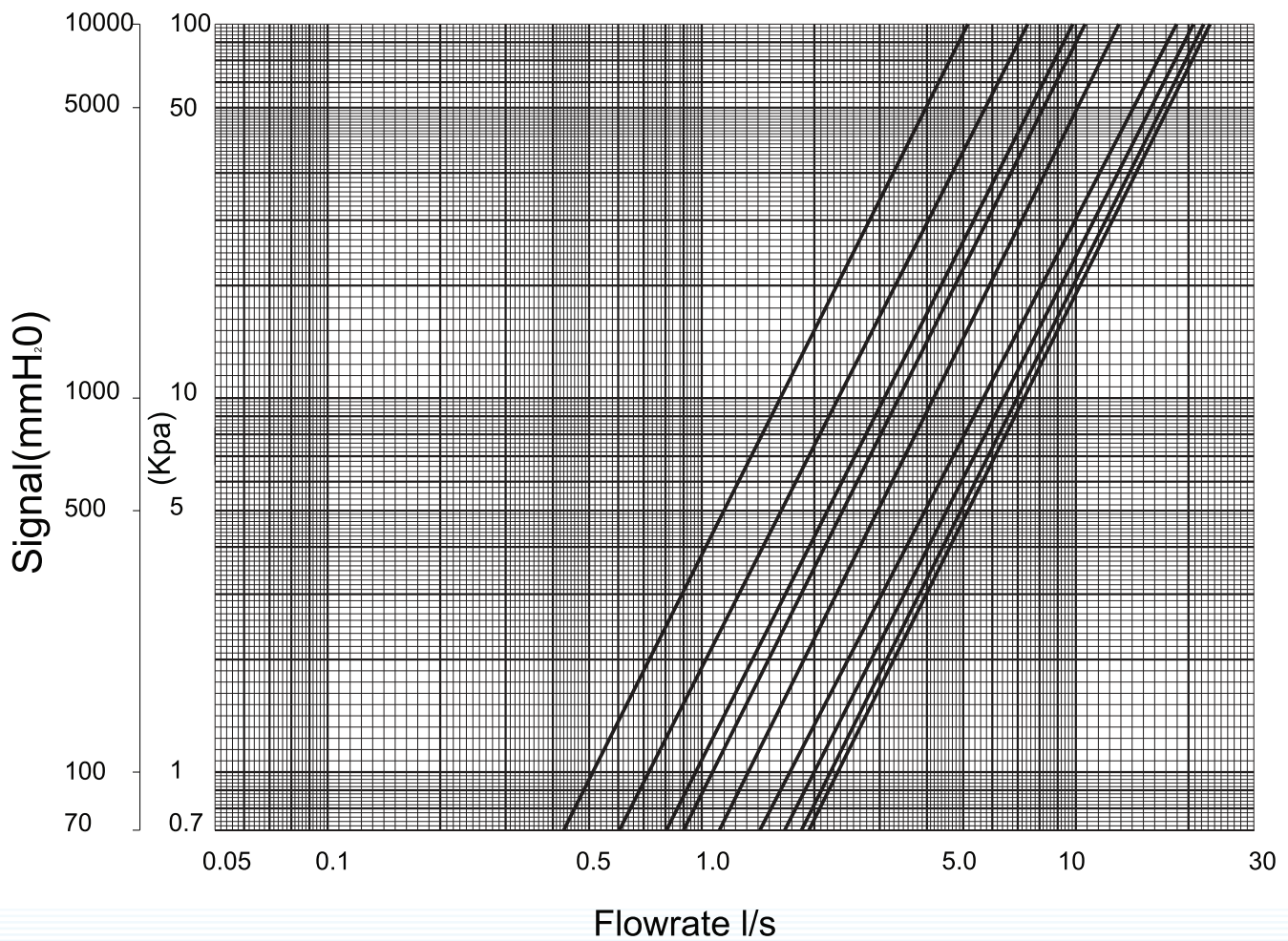
Flow Measurement Graphs

Fixed orifice devices for standard applications

Size 2-1/2" (DN65mm)

Handwheel Setting (Number of turns)

1 2 3 4 5 6 7 8



Handwheel position	1	2	3	4	5	6	7	8	All open
Kv Value	18.6	26.8	35.4	38.7	49.4	65.5	74.6	80.2	83.8



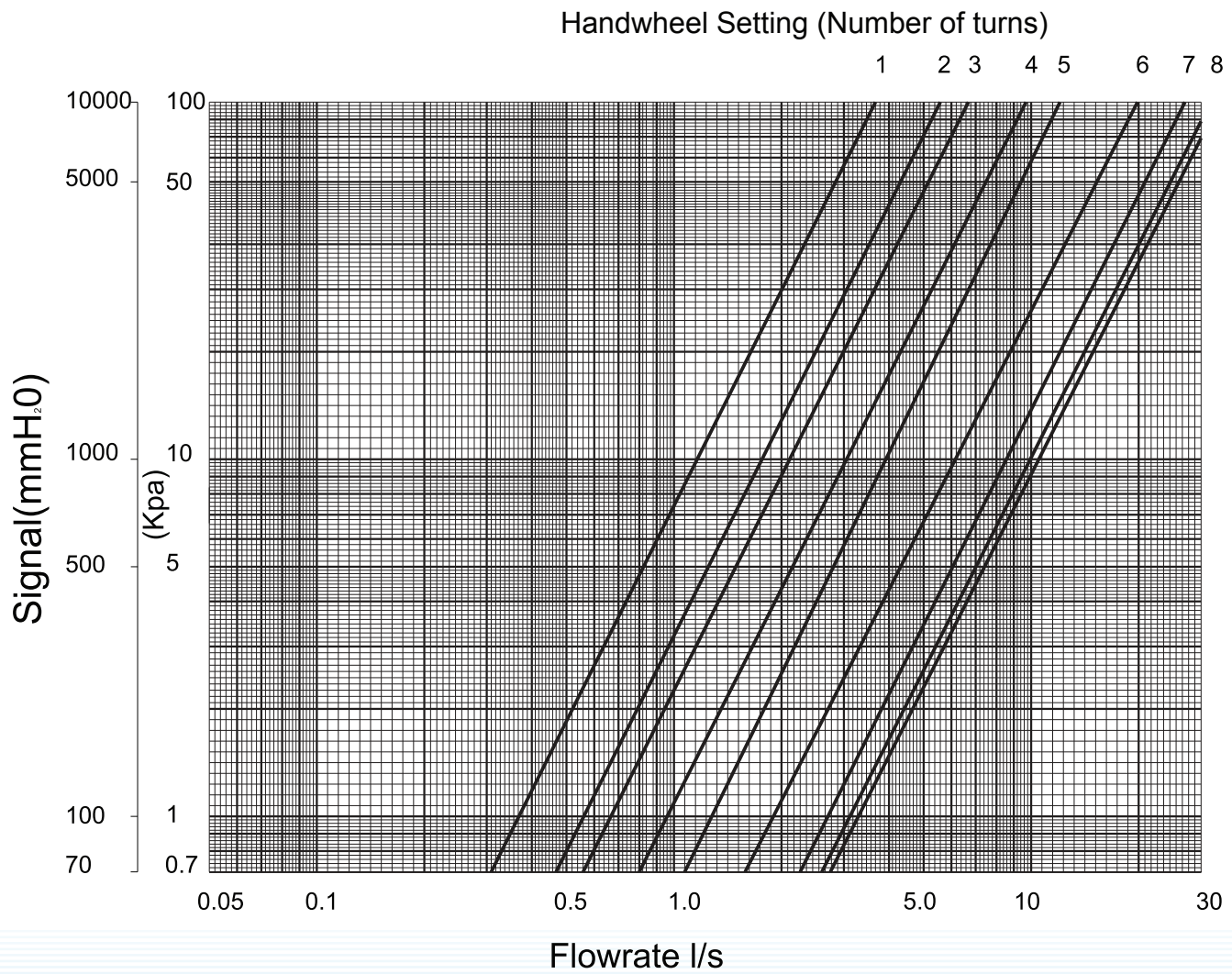
VARIABLE ORIFICE BALANCING VALVE

Model: KVS - 2872

Flow Measurement Graphs

Fixed orifice devices for standard applications

Size 3" (DN80mm)



Handwheel position	1	2	3	4	5	6	7	8	All open
Kv Value	13.3	20.0	24.1	34.9	45.9	71.6	98.8	113.7	83.8



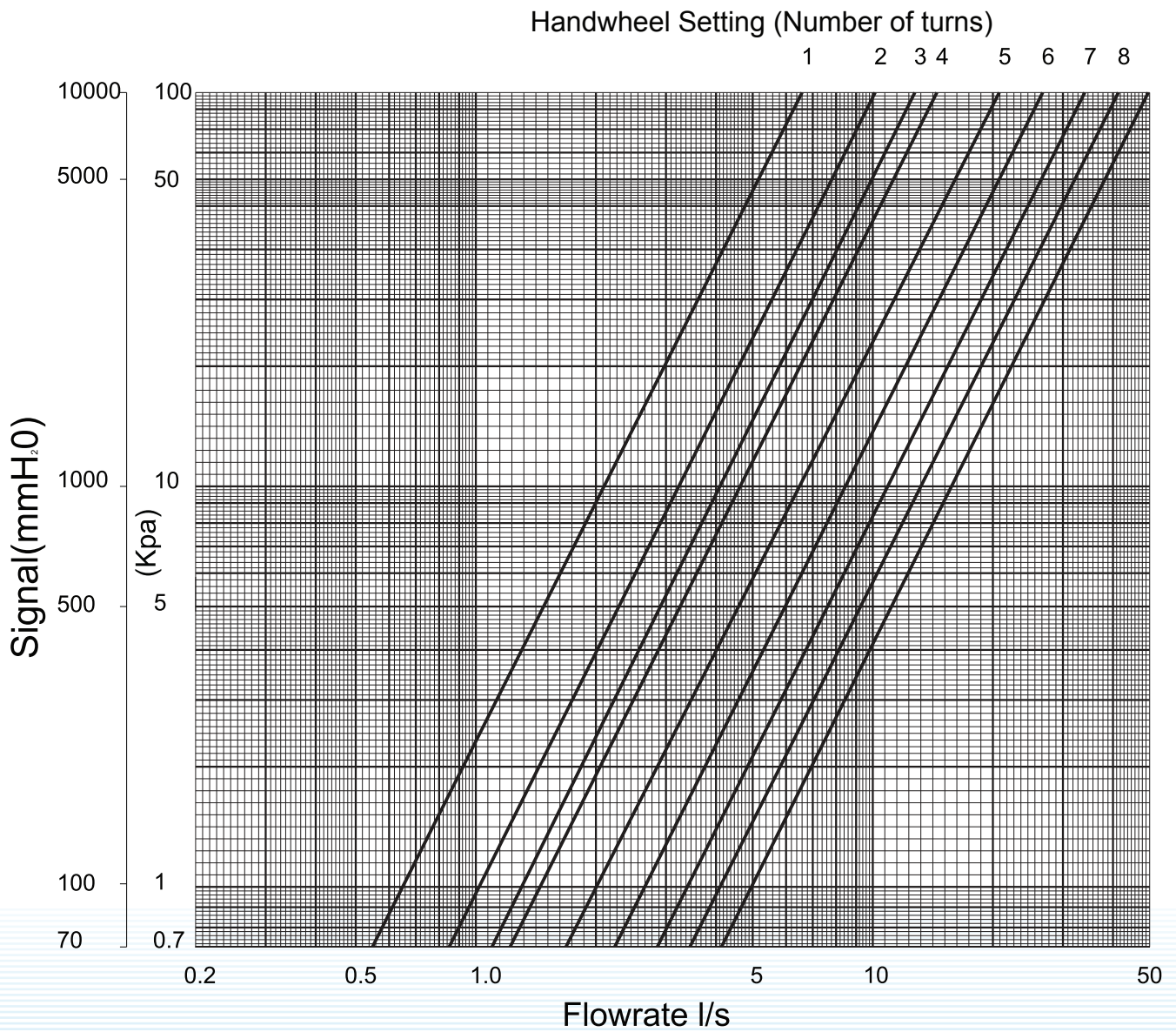
VARIABLE ORIFICE BALANCING VALVE

Model: KVS - 2872

Flow Measurement Graphs

Fixed orifice devices for standard applications

Size 4" (DN100mm)



Handwheel position	1	2	3	4	5	6	7	8	All open
Kv Value	23.6	36.6	48.5	55.2	75.2	97.9	123.9	149.4	178.7



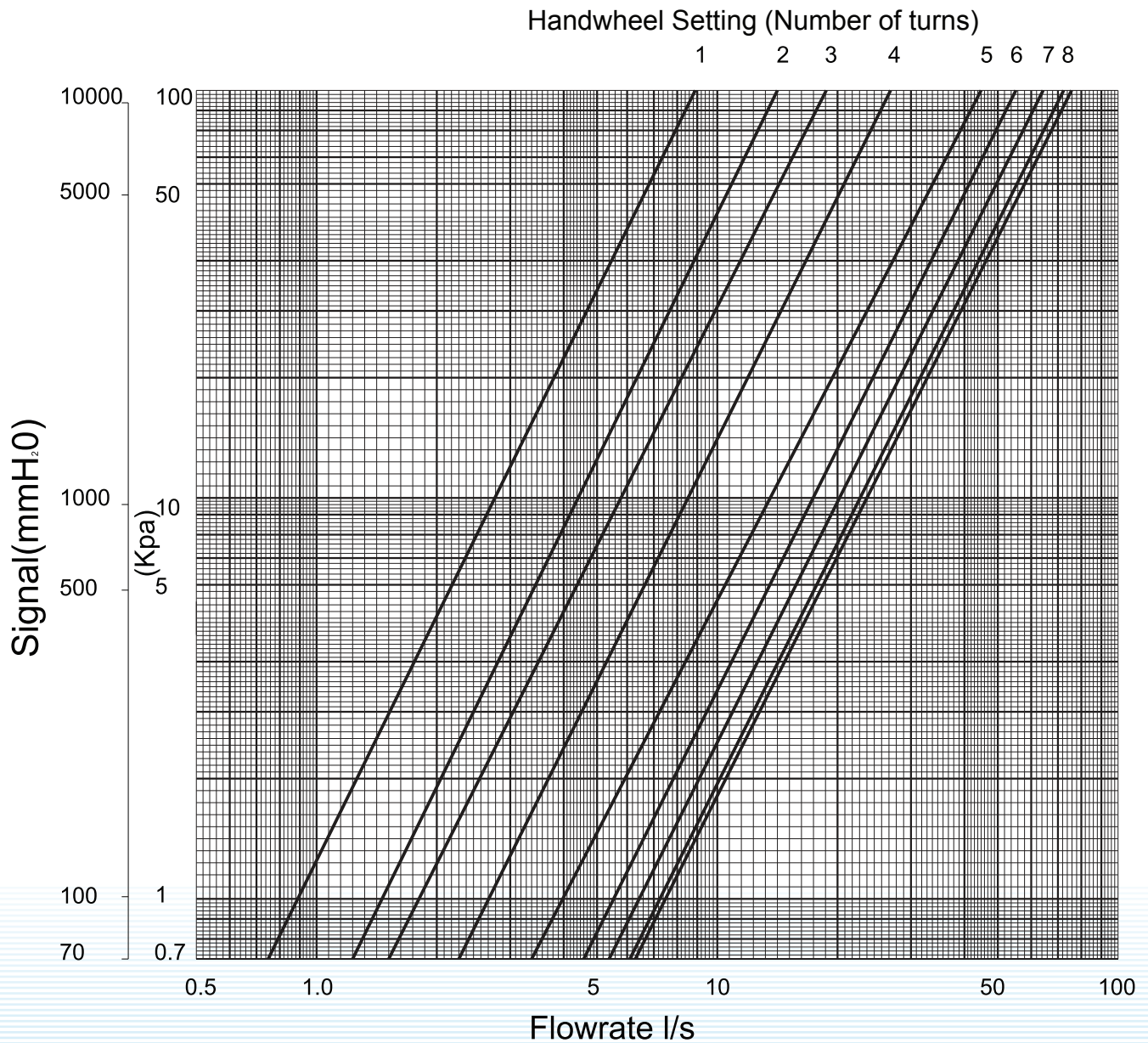
VARIABLE ORIFICE BALANCING VALVE

Model: KVS - 2872

Flow Measurement Graphs

Fixed orifice devices for standard applications

Size 5" (DN125mm)



Handwheel position	1	2	3	4	5	6	7	8	All open
Kv Value	32.2	55.6	68.8	98.0	145.7	199.1	231.7	260.5	272.7



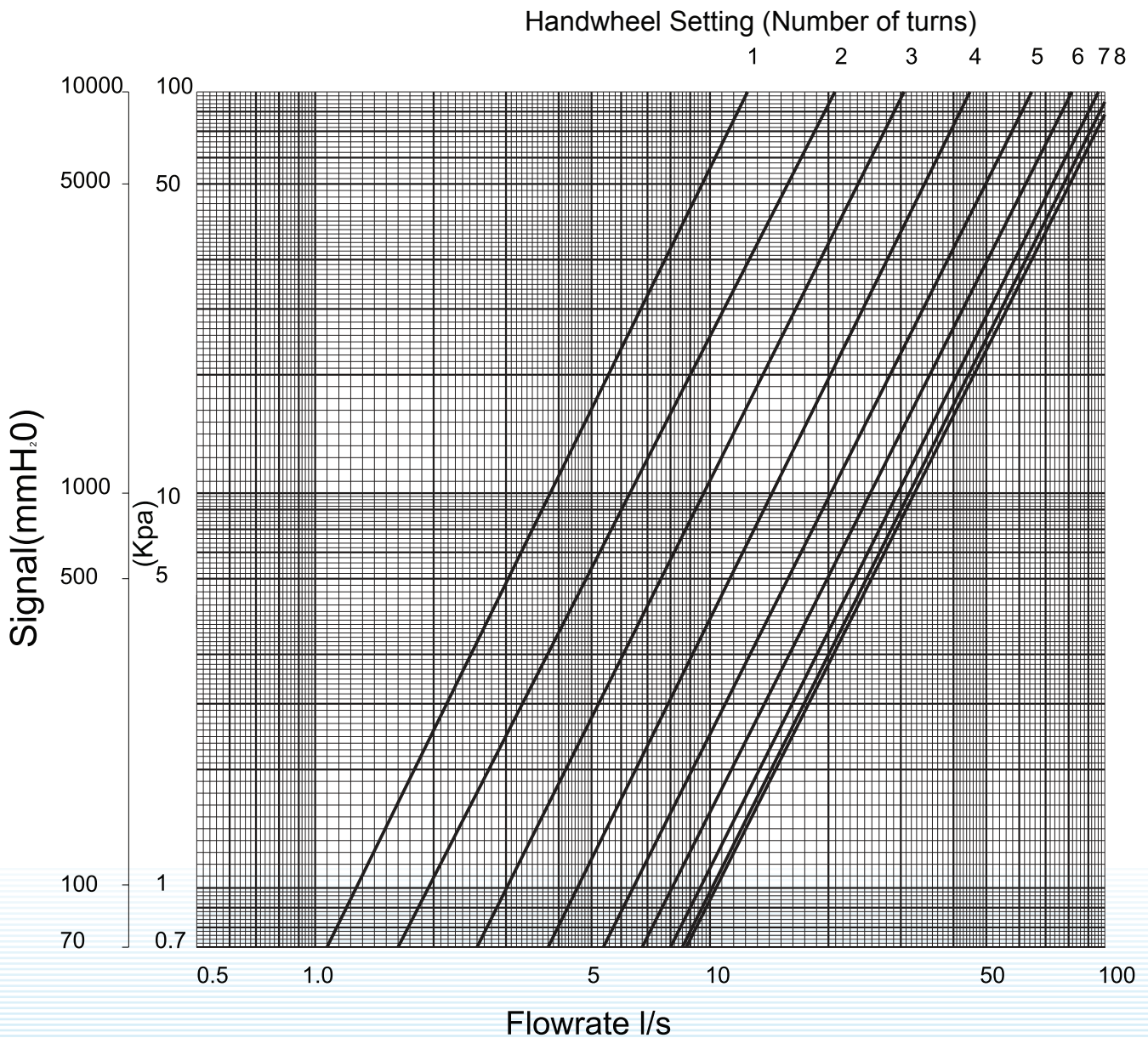
VARIABLE ORIFICE BALANCING VALVE

Model: KVS - 2872

Flow Measurement Graphs

Fixed orifice devices for standard applications

Size 6" (DN150mm)



Handwheel position	1	2	3	4	5	6	7	8	All open
Kv Value	48	75	110	162	233	294	346	371	380



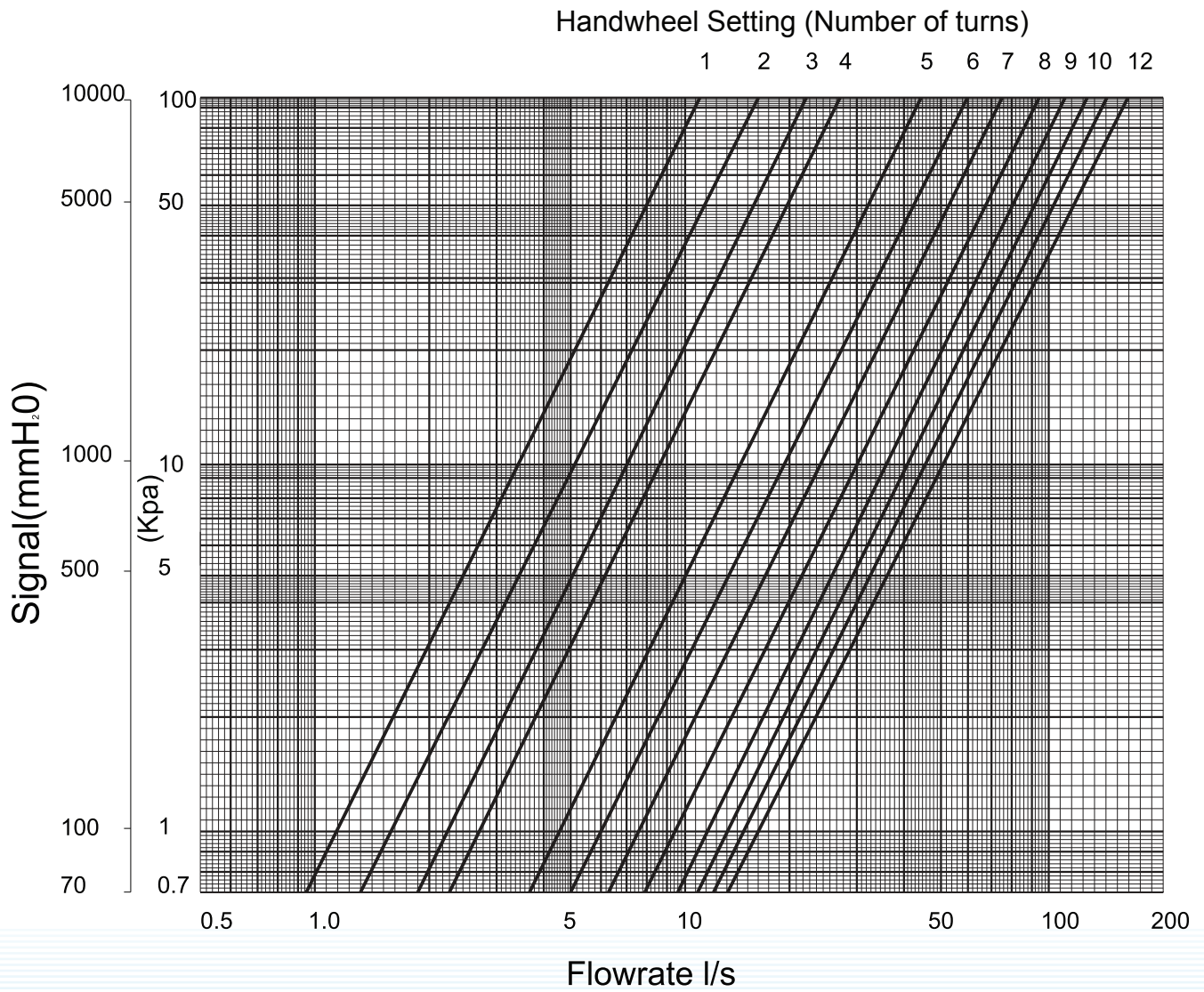
VARIABLE ORIFICE BALANCING VALVE

Model: KVS - 2872

Flow Measurement Graphs

Fixed orifice devices for standard applications

Size 8" (DN200mm)



Handwheel position	1	2	3	4	5	6	7	8	9	10	11	12(All open)
Kv Value	41	61	81	99	161	215	271	339	412	482	546	608



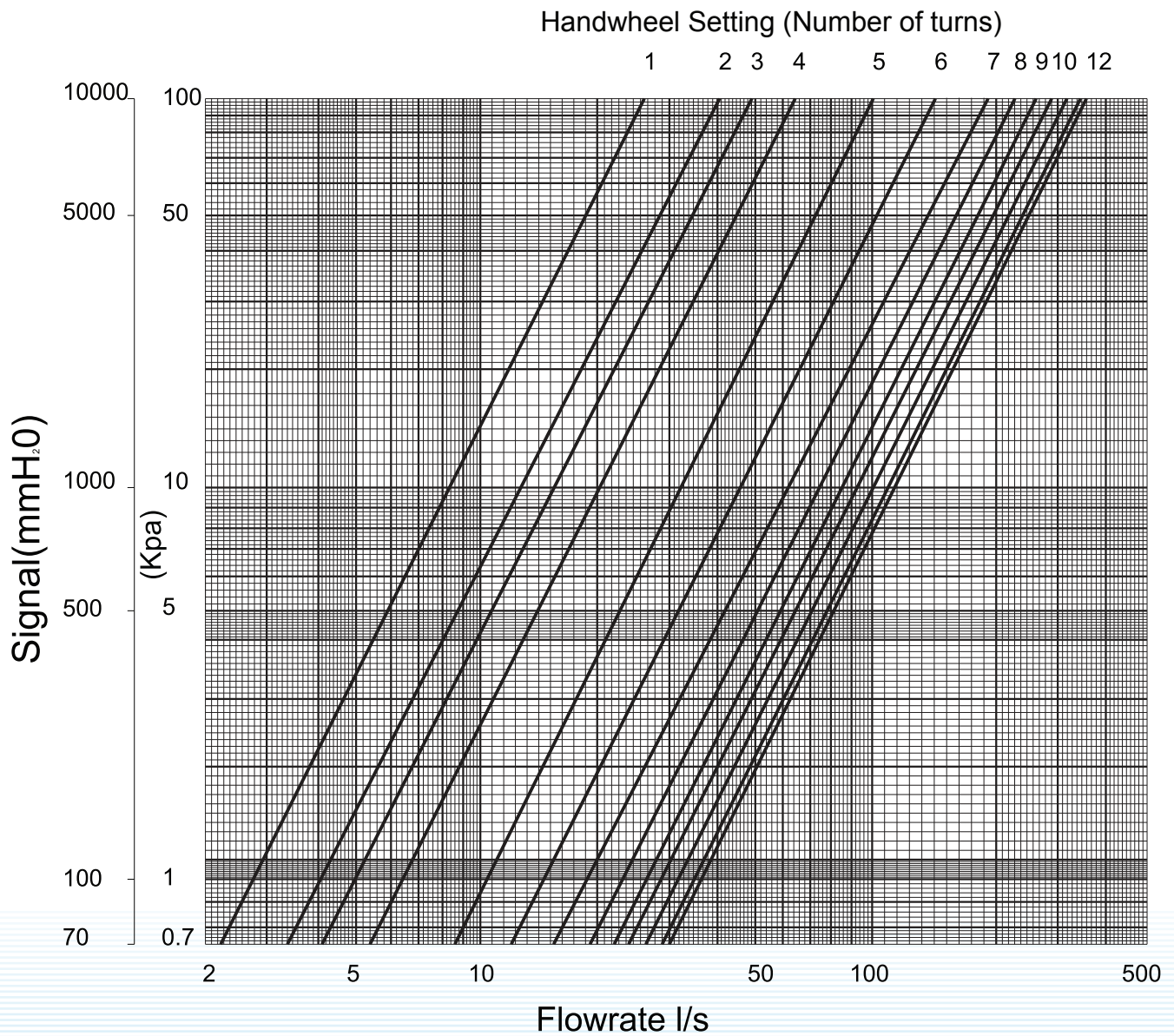
VARIABLE ORIFICE BALANCING VALVE

Model: KVS - 2872

Flow Measurement Graphs

Fixed orifice devices for standard applications

Size 10" (DN250mm)



Handwheel position	1	2	3	4	5	6	7	8	9	10	11	12	(All open)
Kv Value	97	146	177	232	368	543	695	832	960	1045	1151	1249	1292



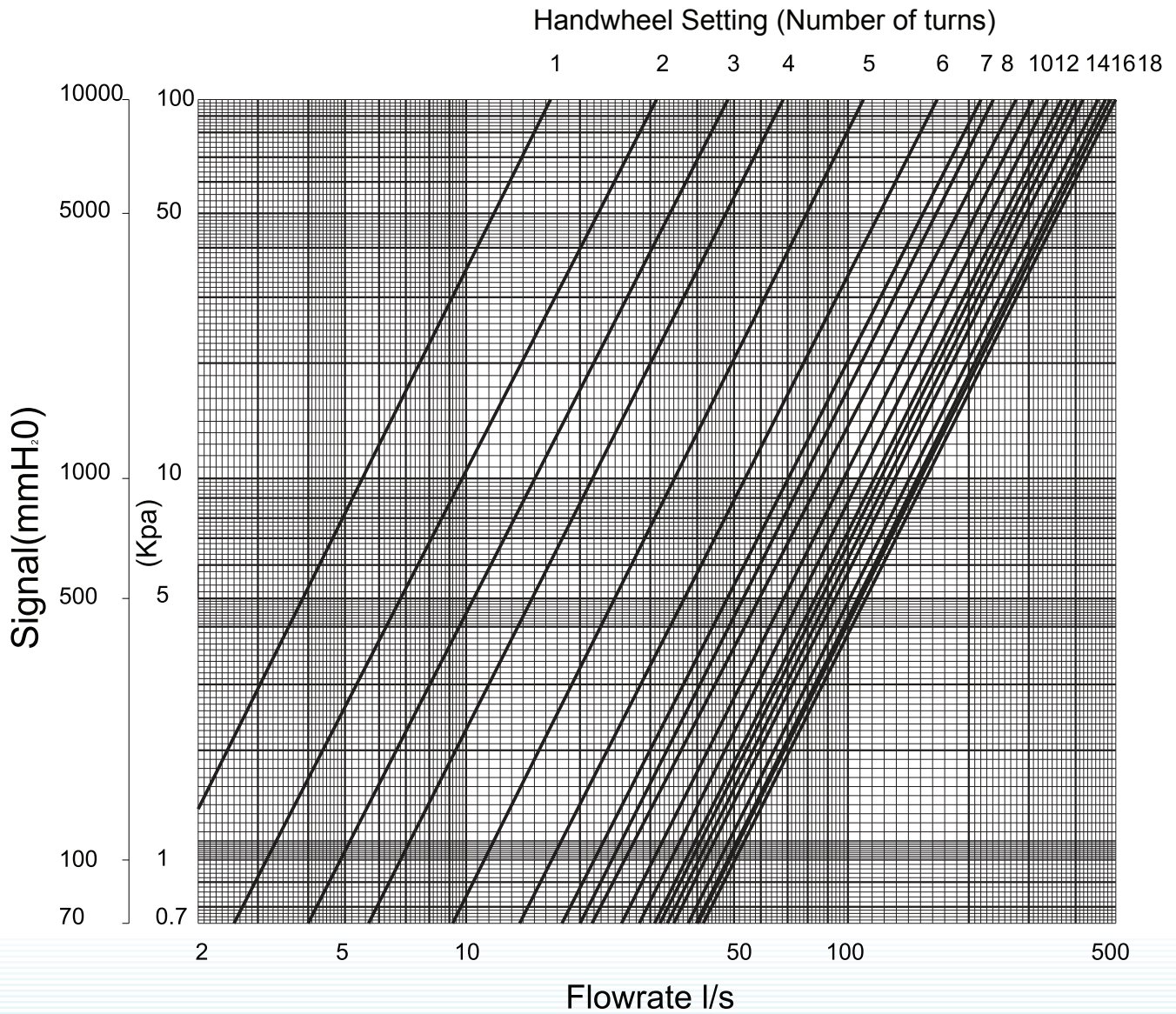
VARIABLE ORIFICE BALANCING VALVE

Model: KVS - 2872

Flow Measurement Graphs

Fixed orifice devices for standard applications

Size 12" (DN300mm)



Handwheel position	1	2	3	4	5	6	7	8	9	10
Kv Value	63	113	174	245	397	628	792	873	1002	1112
Handwheel position	11	12	13	14	15	16	17	18	All open	
Kv Value	1223	1331	1383	1444	1505	1639	1707	1730	1791	