



BUTTERFLY VALVE WITH SUPERVISORY SWITCH

Model: KVS - 309



SPECIFICATION

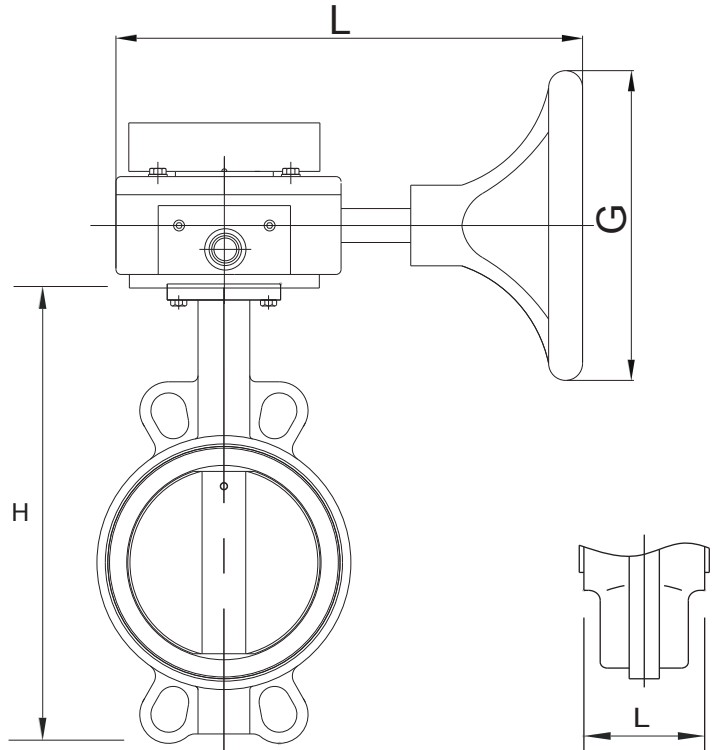
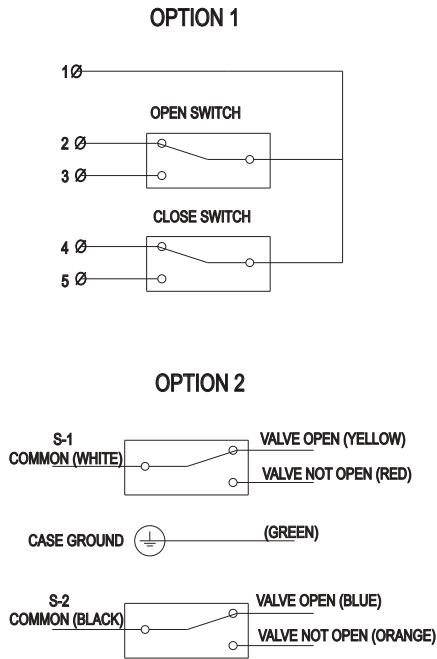
- Indicator light is bright when valve is open fully. Control room give an alarm and indicator light 24V is put out when valve is close to 20° direction.
- There are two switch in gear box, one controls indicator light and the other connects to control room.
- Designed to BS 5155
- Pressure Rating: PN16 / PN25
- Working Medium: Water, Sea Water, Oil. Working temperature: -10...+120°C
- Flanged to BS 4504 / BS EN1092
- Grooved connection available on request
- Top Flange confirms to ISO 5211



BUTTERFLY VALVE WITH SUPERVISORY SWITCH

Model: KVS - 309

WIRING DIAGRAM



MATERIALS

Description	Material
Stem	Stainless Steel 410
Taper Pin	Stainless Steel 410
Disc	DI Nickel Plated / SS304
Seat	EPDM
Body	Cast Iron / Ductile Iron
Worm Gear Head	Cast Iron

DIMENSIONS (mm)

DN		L	H	L1	D
inches	MM				
2"	50	42	241	210	145
2 1/2"	65	44	264	210	145
3"	80	45	276	210	145
4"	100	52	314	210	145
5"	125	54	340	210	145
6"	150	55	365	210	145
8"	200	60	435	300	285
10"	250	65	495	300	285